

Needle Nozzle Cleaning Station

Instructions for P/N 7825249

- 1** Secure the base plate of the needle nozzle cleaning station to a suitable location on the robot.

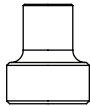


- 2** Install the correct adapter on the cleaning station.

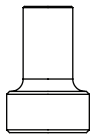
Liquidyn® needle nozzles
(Nozzle part numbers beginning
with "7825")



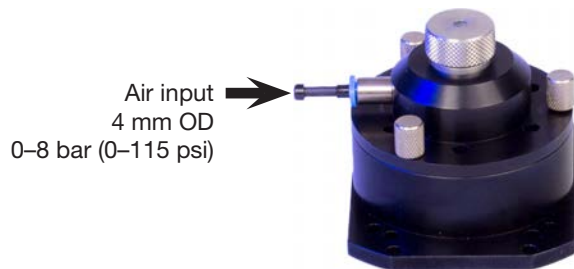
Optimum® general purpose
stainless steel tips (straight)
6.35 mm (0.25")



Optimum general purpose
stainless steel tips (straight)
12.7 mm (0.5")



- 3** Connect a compressed air supply to the air input port on the cleaning station.



- 4** Program the robot to do the following:

- Move the nozzle / tip directly above the opening in the adapter.
- Lower the valve until the valve body pushes the adapter slightly down into the cleaning station.



For Nordson EFD sales and service in over 40 countries, contact Nordson EFD or go to www.nordsonefd.com.

800-556-3484; +1-401-431-7000

info@nordsonefd.com

europa@nordsonefd.com

asia@nordsonefd.com

©2017 Nordson Corporation 7363200 v060817