

Encore® Enhance

Powder coating spray gun controller



Modular and upgradable – an automatic and manual gun controller with configurable gun triggering for all powder applications.

Encore Enhance brings advanced control functionality to your automatic powder spray system. Whether it's venturi or Nordson's dense-phase technology, Encore Enhance is the right choice no matter what powder application technology you use. Developed to provide a full range of offerings, the Encore controller is sure to enhance your powder productivity.



Features and benefits

- **New system functionality**
 - **Peer-to-Peer (P2P) communication between controller interfaces makes life simple** with 'one-touch' triggering, recipe copy, recipe selection and color change
 - **Configurable automatic triggering enables**
 - P2P triggering and gun grouping
 - 'No part, no spray' identification
 - Remote PLC triggering
 - Simple triggering
 - **Self-diagnostic fault codes** take the guesswork out of troubleshooting
 - **Maintenance timers** provide advanced replacement part notification
 - **Configure in SCFM or m³/hr**
 - **Customize and store up to 99 recipes** for repeatable application accuracy
- **Scalable** – As your production requirements change, this controller can adapt with you. Easily add up to 10 modular automatic or manual gun controllers to your powder coating system in a single stack!*
- **Flexible** – Convert your venturi application to dense-phase technology by simply adding Encore HD guns and pumps to your system

Electrostatic and pneumatic operating modes

- **Patented Nordson Select Charge technology** is pre-set for deep cavity, re-coating or metallic powder applications
- **Custom electrostatic control** gives flexibility to set kV and AFC independently
- **Closed loop airflow control** ensures powder flow consistency
- **Smart Flow air pressure control** adjusts powder output without affecting your spray velocity



Encore Enhance Controller - available system components

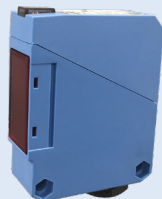
Automatic spray guns



Encore Manual Guns



Photo eye



Encore HD pump



NHR Series Fluidizing Hoppers



Encore Venturi Pump



Encore Enhance controller specifications

Dimensions	Weight (Controller)	Input air pressure	Supply air hose	Gun air (electrode air wash)	Air consumption per gun (typ)	Electrical
Height: 71.16 in (1807.5 mm) Width: 24.61 in (625 mm) Depth: 23.68 in (601.4 mm)	Controller: 404 lbs (183 kg)	Min: 90 PSI (6.2 bar) Max: 110 PSI (7.6 bar)	16 mm tube	0.25 scfm (0.42 m ³ /hr) @ 100 psi (6.9 bar) input pressure	Venturi: 6 scfm (10.2 m ³ /hr) HD: 3 scfm (5.1 m ³ /hr)**	Input: 100-250 VAC, 1 phase, 50/60 Hz, 450 VA Max Output: +/- 19 VAC, +/- 1.0 A

**Single gun at 50% flow with 1.5 scfm (2.5 m³/hr) pattern air

© 2021 Nordson Corporation | All Rights Reserved | PWL-19-6090 | Issued 6/21

Nordson Industrial Coating Systems

100 Nordson Drive
Amherst, OH, 44001
USA

Phone: +1.440.985.4000
www.nordson.com/ics

/Nordson_Coating

/NordsonICS

/company/nordson-industrial-coating-systems

Find your local Nordson office:
www.nordson.com/icslocations

Performance by design

