

Encore® Engage Control with Confidence

A reimagined, intuitive user experience



Control with Confidence

Our Encore Engage powder application controller provides everything you need to know on a single screen. One that's been completely redesigned so you have clarity and confidence in every step of your coating operation.

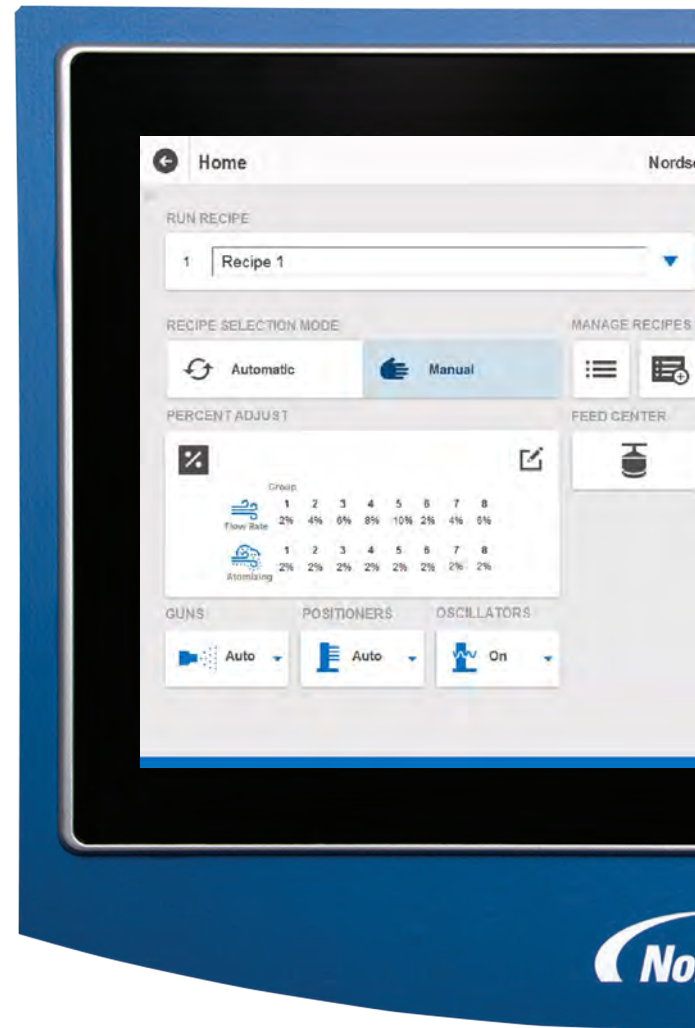
A simple to use and intuitive interface for powder coating - that's a revelation! Greater visibility of key information assures that every decision you make is the right one.

Engage features industrial router technology to connect with Wisdom smart connected platform in real time from your connected mobile device or desktop browser.

Experience powder coating in a new way

A completely reimagined, modern user interface offers effortless, intuitive control for operators, meaning increased efficiency and maximum productivity.

From the very start, we designed Encore Engage with powder coaters in mind, building in customer feedback and making user experience our top priority.



Rethink your user experience today
www.nordsoncoating.com/engage



User friendly, intuitive interface

A 15-inch easy-to-read, contemporary and smart touch screen displays all essential system information and alerts on one screen.



Video tutorials

Clear, step-by-step video instructions guide an operator through the critical tasks reducing training requirements.



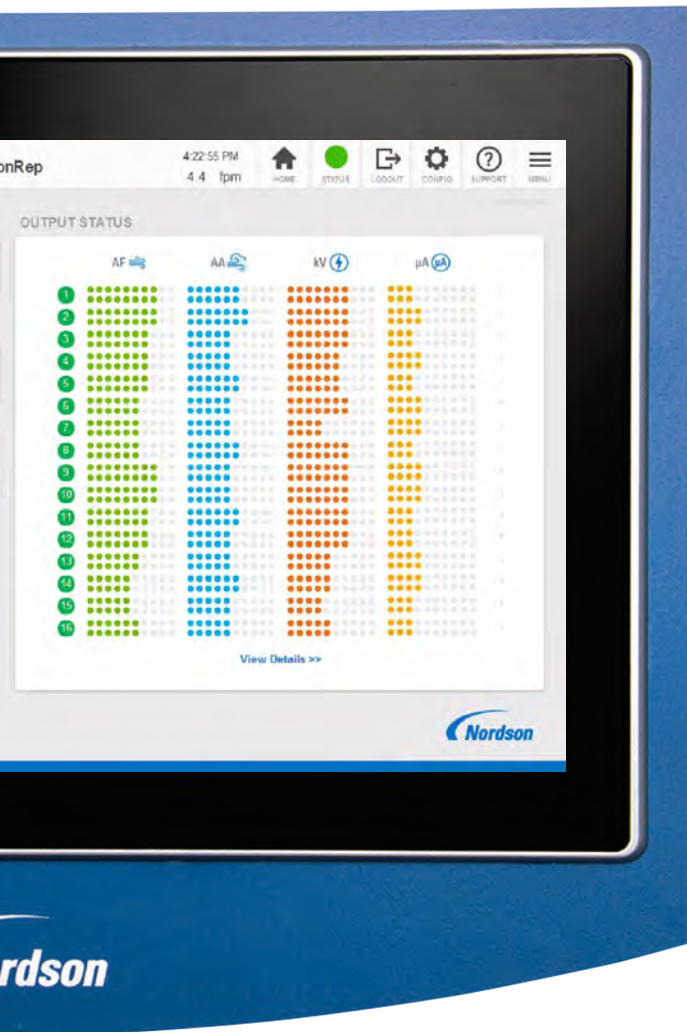
Guided recipe creation

Use guided walkthrough to create new recipes, select from preset options, or copy and modify an existing recipe.



Real-time performance data

Easy-to-access output status and other performance metrics to manage quality and productivity.



The information you want, the results you need

Make informed decisions based on data for better results every time.

Encore Engage displays component performance and system alerts from your connected powder coating system.

wisdom™
smart connected platform

Stay connected anywhere, any time

Wisdom® features data analytics, remote connectivity and tools to manage your powder coating process from anywhere in the world. Dashboards for monitoring, maintenance, system performance and reporting connect to Encore Engage to give you access to all your data on the go.

Wisdom features are subject to hardware and regional availability.



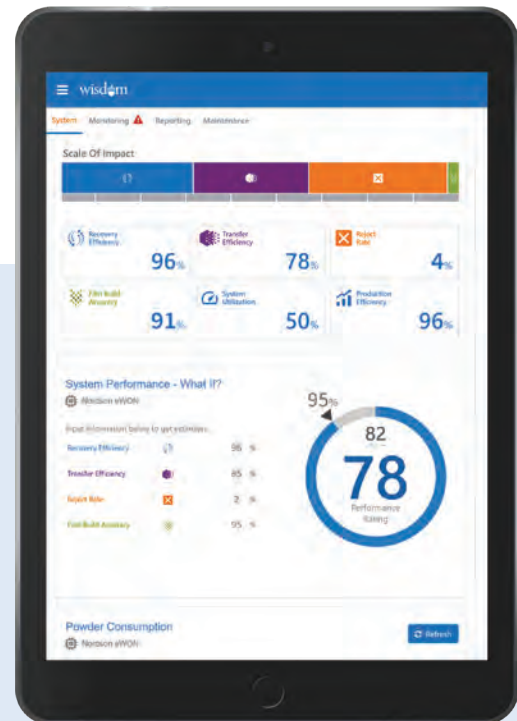
Easy operation

Modern graphics, intuitive symbols and a choice of screen language configurations make the system easy to use for all operators.



Multi-gun configuration

Adjust flow rates or electrostatic charge for single guns, groups of guns or all guns to save time.





Application Performance

- Percent adjust feature for incremental fine tuning of powder output
- Individual or global set-up and monitoring of:
 - Electrostatic gun parameters for kV and μ A
 - Flow and atomizing gun air parameters
- Patented Nordson Select Charge[®] electrostatic technology for one-touch electrostatic recipes and automatic feedback current (AFC) control
- Closed-loop digital flow control technology for consistent air flow to the powder pumps



System Control

- Compatible with part ID and light curtains for automatic gun triggering
- Oscillator or reciprocator gun mover axis control, including in/out gun positioning
- Compatible with all Encore powder coating guns and pumps
- Spectrum[®] Powder Feed Center interface
- 255 coating recipe capacity



User Guidance

- Recipe creation wizard
- Onscreen user tutorials
- Troubleshooting and system alarms
- Preventative maintenance timers
- Full system simulation mode for operator training



Hardware

- 15-inch color touch screen on cabinet with option: Up to two additional touch screens
- Ethernet and wireless cloud connectivity
- Two USB ports

© 2021 Nordson Corporation | All Rights Reserved | PWL-19-6127 | Issued 06/21

Why choose Nordson

In highly competitive manufacturing markets, productivity is vital and performance is essential. That's why we apply both to everything we do, whether it's our products, expertise or outstanding customer service. We'll always be there to help maintain the new standards you've set, with expert service and support delivered through our teams working across the globe.

This unique Nordson approach helps you reach new levels of production, while working more accurately, efficiently and competitively than ever. Precisely why manufacturers who demand quality, can rely on Nordson.

Nordson Industrial Coating Systems

100 Nordson Drive
Amherst, OH, 44001
USA

Phone: +1.440.985.4000
www.nordson.com/ics

 [/NordsonICS](#)

 [/company/nordson-industrial-coating-systems](#)

Find your local Nordson office:

www.nordson.com/icslocations

