

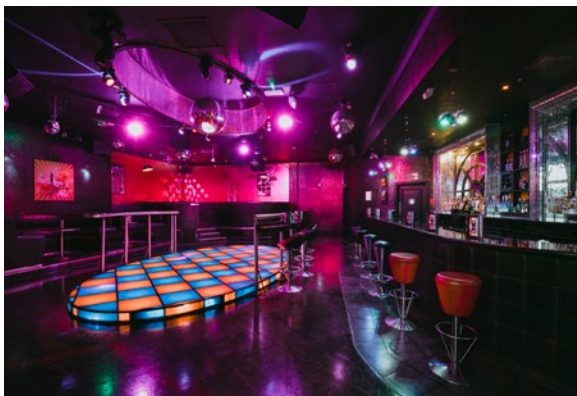


Soluva[®] Air M

Safe UV (UVGI) disinfection for larger rooms such as reception halls, cafeterias, production areas.



Soluva® Air M provides air disinfection using UV light in larger enclosed spaces such as manufacturing areas, cafeterias, cold storage rooms, hotel lobbies, or auditoriums in schools. The powerful ceiling-mounted device treats the air and thus reduces the germ load.





MADE IN GERMANY
100% QUALITY
CONTROL 

Fig.:
 RAL 9016 Traffic white,
 cover: brushed stainless steel



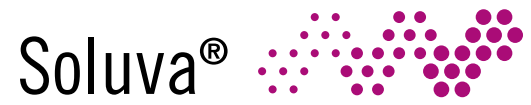
UV light in a wavelength of 200 to 300 nm splits the RNA/DNA of viruses, such as the Corona virus, and other microorganisms and thus produces a strong disinfecting effect.

This is also proven through multiple independent scientific tests by the Fraunhofer Institute for Building Physics, Hygiene Institute, biotec GmbH and the University Hospital of Tübingen.

The testing by these institutes verified destruction of viruses on surfaces and in air when using Soluva® products. The tested UVC devices eliminate at least 99% of the viruses (SARS-CoV-2 surrogate used in testing).

	Soluva® Air M8	Soluva® Air M10
Dimensions (W × D × H)	1415 × 382 × 456mm (55.7 × 15.0 × 18.0 in)	1160 × 376 × 487 mm (45.7 × 14.8 × 19.2 in)
Weight	43kg (94.8 lb)	35 kg (77.2 lbs)
Nominal power (W)	1000	1000
Nominal voltage (V)	1/N / PE AC 50 / 60Hz 230V 120V 60Hz / 240V 60Hz	1/N / PE AC 50 / 60Hz 230V 120V 60Hz / 240V 60Hz
Air volume fan	approx. 1635 m³/h (962 CFM)	approx. 2250 m³/h (1324 CFM)
Airflow rate	approx. 700 m³/h (412 CFM)	approx. 1100 m³/h (648 CFM)
Noise (measured in 1 m distance)	approx. 40 dB(A)	approx. 54 dB(A)
UV-C power at beginning of Lifetime (W)	200	200
Ambient temp. operation	min. 0 °C (32 °F) / max. 35 °C (95 °F)	min. 0 °C (32 °F) / max. 35 °C (95 °F)
Ambient temp. storage/transport	-10 – max. 60 °C (14 °F – max. 140 °F)	-10 – max. 60 °C (14 °F – max. 140 °F)
Relative humidity (non-condensing)	25 – 80%	25 – 80%
Type of protection	IP20 (IP54 for electrical control)	IP20 (IP54 for electrical control)
Minimum ceiling height *	2.85m (9.35 ft)	3,0 m (9.84 ft)
Color	RAL 9016 Traffic white	Brushed stainless steel/ RAL 9016 Traffic white

* Special solutions are available on request for lower room heights



www.soluva.com

Heraeus Noblelight GmbH

Heraeusstr. 12-14

63450 Hanau, Germany

Phone: +49 6181 35 5522

service@heraeus-soluva.com

Italy: +39 02 95759 212

Spain: +34 933 208 042

France: +33 1 6918 4851

Great Britain: +44 1295 272666

USA

Heraeus Noblelight America LLC

910 Clopper Road

Gaithersburg, MD 20878

Phone +1 240 690 3300

soluva.hna@heraeus.com

Please note that all information regarding the products and their properties may vary. 2021/08