

380mL Coaxial Cartridge



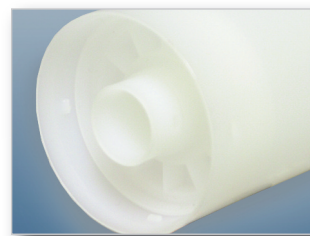
The 380mL coaxial cartridge has a center tube that contains one material and an outer “doughnut” that contains a second material in a 10:1 ratio. The cartridge comes assembled with a valve that rotates to open and close, eliminating the need for a plug closure and retaining nut.

Features

- Rotating valve opens and closes outlet
- Valve wrench handle sold separately (7702589)
- Molded valve seals ensure long, leak-free shelf life
- Partially used cartridges are easily re-sealed by closing valve
- Staked cartridge keeps pistons secure (7026776)
- Pre-inserted pistons for ease of filling through the nose
- Option to purchase pistons separately (no staking done)
 - 7026777 Cartridge body with valve (no staking)
 - 7704170 Inner piston
 - 7704171 Doughnut piston
- Available in 10:1 ratio only
- Nylon construction



Large bores for greater flow



Coaxial design (staked)

For Nordson EFD sales and service in over 30 countries, contact Nordson EFD or go to www.nordsonefd.com

East Providence, RI USA

USA & Canada: 800.556.3484;

+1.401.431.7000

info@nordsonefd.com

Dunstable, Bedfordshire, UK

0800 585733; +44 (0) 1582 666334

Ireland 00800 8272 9444

europa@nordsonefd.com

India +91 80 4021 3600

Mobile: +91 98450 48481

india@nordsonefd.com

China: +86 (21) 3866 9006

china@nordsonefd.com

The Wave Design is a trademark of Nordson Corporation. ©2013 Nordson Corporation v052913

Nordson
EFD