

# 400mL Cartridge Systems

Nordson EFD offers large cartridge systems in 400mL size. The size relates to the total volume capacity of both sides of the cartridges—for instance, the 400mL holds “approximately” 200mL in each side with a total maximum volume of 406mL.

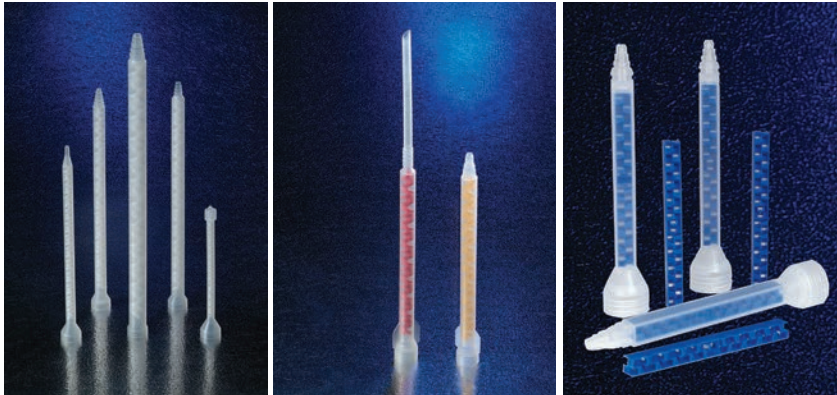
## Features

- 1:1 ratio
- Total volume capacity of 406mL
- High quality, sturdy one-piece design
- Fits industry standard dispensers
- Available from stock Open or closed outlet
- Solid Multi-Seal Piston or Multi-Seal Piston with Prestage Center Bleed Plug



## Recommended Mixers

- Series 160 Disposable Plastic Spiral Bell Mixer
- Series 260 Spiral Bell
- Series 180A Turbo Bell Series
- Series 280 Disposable Plastic Turbo (Square) Bell Mixer
- Series 281N Disposable Plastic High Flow Turbo (Square) Mixer

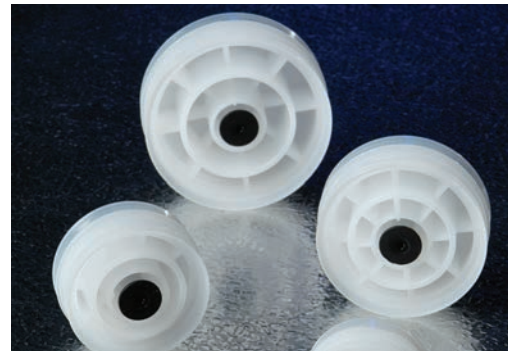


## Dispensers

Nordson EFD offers high-performing manual and pneumatic dispensers for 400mL cartridges.

## Pistons

- Solid Multi-Seal Pistons
- Multi-Seal Pistons with a Prestaged Center
- Bleed Plug which prevents trapped air when inserting the piston without using a shim



Part #	Description	Ratio	Maximum Volume	Material
7703011 (CK400SS-01)	Open Cartridge w/Installed Nose Plug & 3/8" Nut	1:1	406mL	PP
7703013 (CK400SS-02)	Open Cartridge w/Installed Nose Plug & 1/2" Nut	1:1	406mL	PP
7028234	Open Cartridge w/Installed Nose Plug & 1/2" Nut	1:1	400mL	Nylon
7702965 (C401SS-01)	Closed Cartridge w/Protective Cap	1:1	406mL	PP
7702677 (B-242-21*)	Solid Multi-Seal Piston	1:1	-	PP
7702757 (B-341-31*)	Multi-Seal Piston w/Prestaged Bleed Plug	1:1	-	PP
7702968 (C401SS-02)	Closed Cartridge w/Protective Cap	1:1	406mL	Nylon
7702759 (B-341-32*)	Multi-Seal Piston w/Prestaged Bleed Plug	1:1	-	Nylon

\* Multi-Seal Pistons available with O-Rings. Please consult our Technical Service or Sales Dept.



For Nordson EFD sales and service in over 40 countries, contact Nordson EFD or go to [www.nordsonefd.com](http://www.nordsonefd.com).

**Global**

800-556-3484; +1-401-431-7000  
[info@nordsonefd.com](mailto:info@nordsonefd.com)

**Europe**

00800 7001 7001  
[infoefd.europe@nordsonefd.com](mailto:infoefd.europe@nordsonefd.com)

**Asia**

China: +86 (21) 3866 9006; [china@nordsonefd.com](mailto:china@nordsonefd.com)  
 India: +91 80 4021 3600; [india@nordsonefd.com](mailto:india@nordsonefd.com)  
 Japan: +81 03 5762 2760; [japan@nordsonefd.com](mailto:japan@nordsonefd.com)  
 Korea: +82-31-736-8321; [korea@nordsonefd.com](mailto:korea@nordsonefd.com)  
 SEAsia: +65 6796 9522; [sin-mal@nordsonefd.com](mailto:sin-mal@nordsonefd.com)

©2020 Nordson Corporation v123120